

VI-Q Series HMI Product Manual



VI-Q Series General-Purpose HMI

The VI-Q Series HMI is a new generation of HMI independently developed by INVT. Built on an all-new software architecture, it delivers smooth operation with enhanced security and reliability. Featuring a wide range of communication interfaces, the VI-Q Series HMI is a powerful, highly cost-effective HMI.

By integrating the company's product portfolio including PLCs, frequency converters, servo systems and IoT solutions, we deliver one-stop automation solutions, create tangible value for customers, and strive to be their most reliable partner.



All-New Design

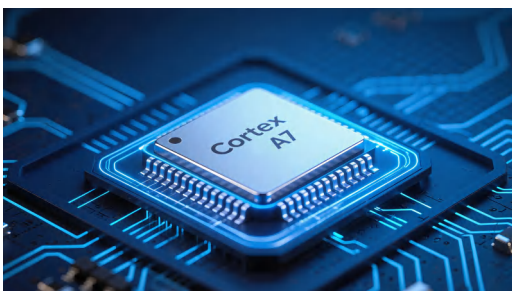
- Light gray body, minimalist and modern
- 24-bit color precision reproduction, vivid and brilliant
- Covering 4.3/7/10.2/15.6-inch screens



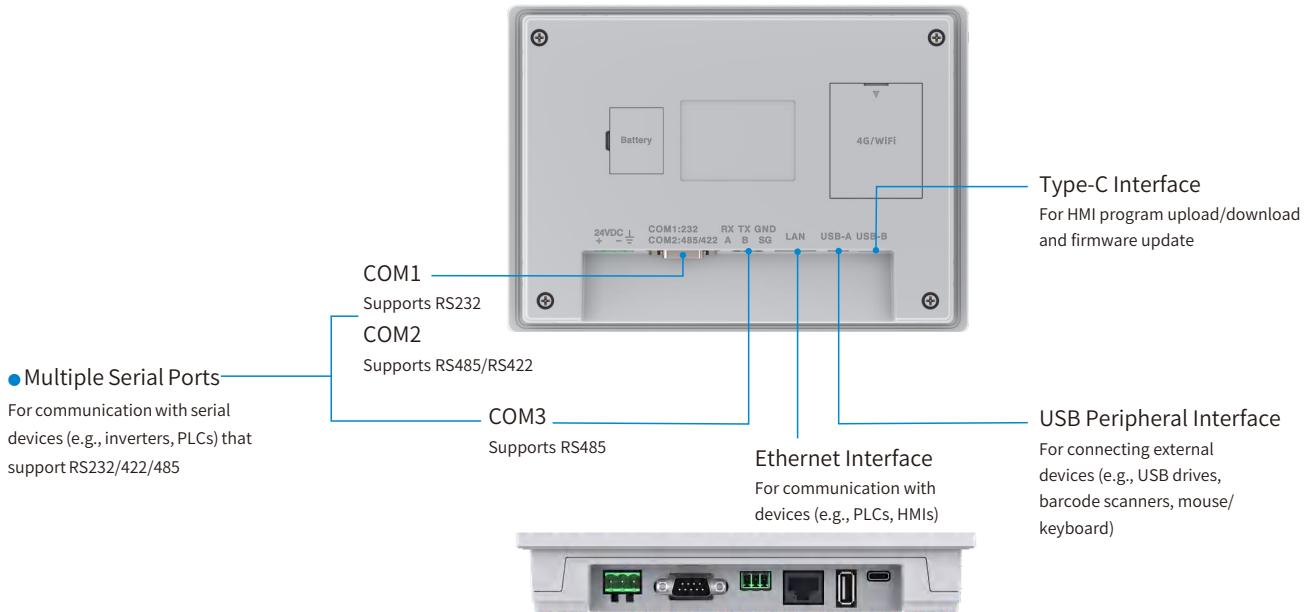
*The 4.3-inch and 15.6-inch models are expected to launch in 2026

High Performance

- Standard equipped with dual-core Cortex-A7 CPU, balancing performance and power consumption.
- ARM architecture paired with Linux system, delivering smooth and efficient performance.



Rich Interfaces



Smart Connectivity

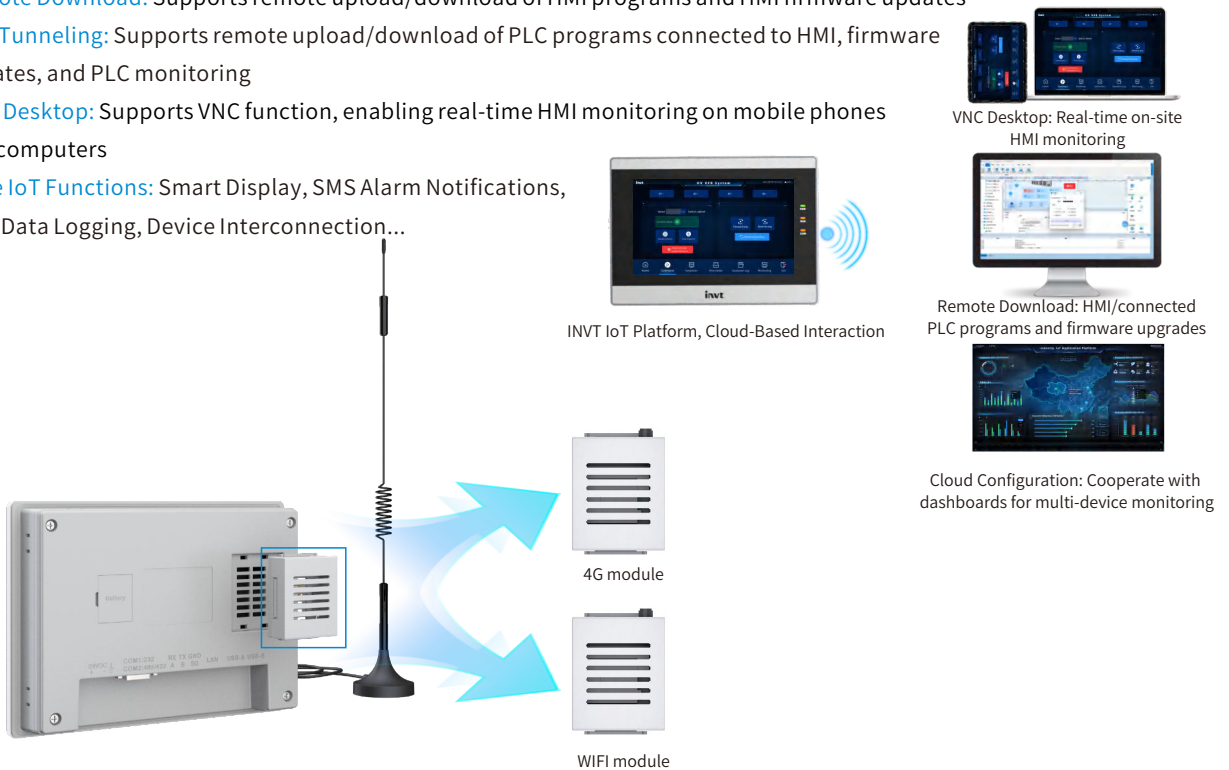
- Integrates with INVT Cloud Platform, supporting full integration of mobile/desktop/web terminals.
- Expandable with 4G/WIFI IoT modules, allowing flexible selection based on the on-site environment.

Remote Download: Supports remote upload/download of HMI programs and HMI firmware updates

VPN Tunneling: Supports remote upload/download of PLC programs connected to HMI, firmware updates, and PLC monitoring

VNC Desktop: Supports VNC function, enabling real-time HMI monitoring on mobile phones and computers

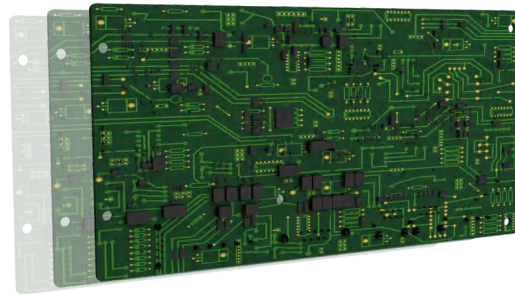
More IoT Functions: Smart Display, SMS Alarm Notifications, Web Data Logging, Device Interconnection...



*4G/WIFI modules are expected to launch in Q1 2026

Safe and Reliable

- Front panel complies with IP65
- PCB boards coated with UV adhesive for protection, effectively adapts to harsh environments



Featured Functions

[HMI Desktop Widget](#)

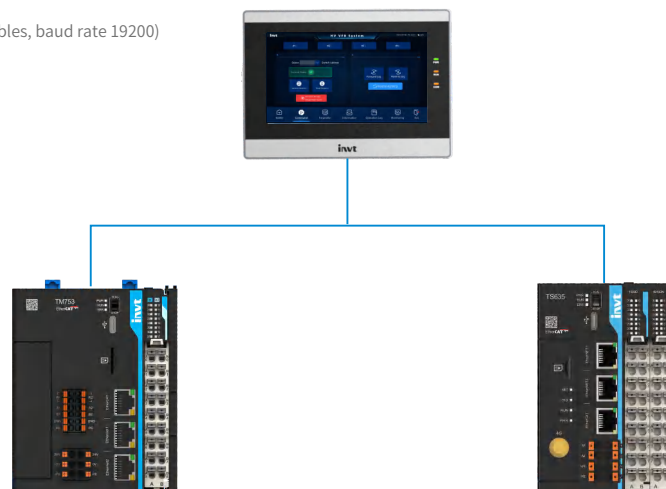
Directly open background settings on HMI to view IP address, set time, switch languages, etc.



[INVT PLCs Fast Protocol](#)

Exclusive communication protocol for INVT TS/TM series PLCs; Discrete Variable Communication Speed Increased by 100% Compared to VS Series

(Note: Test condition: 300 discrete variables, baud rate 19200)

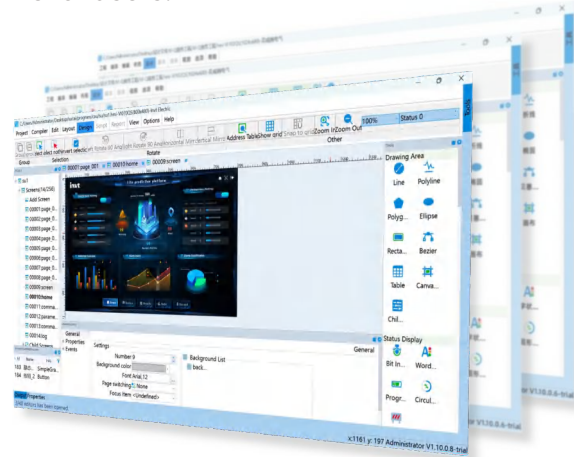


[AI Function](#)

Intelligent AI alarm, AI script writing, predictive maintenance, etc. (Coming soon)

New Software

- INVT's new HMI configuration software, INVT Touch Station, is user-friendly and significantly reduces programming time for users.



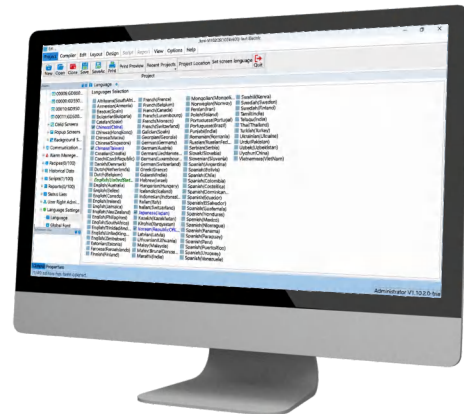
Offline Simulation/Online Simulation

Supports HMI simulation functionality and enables joint online simulation with TS/TM series PLCs.



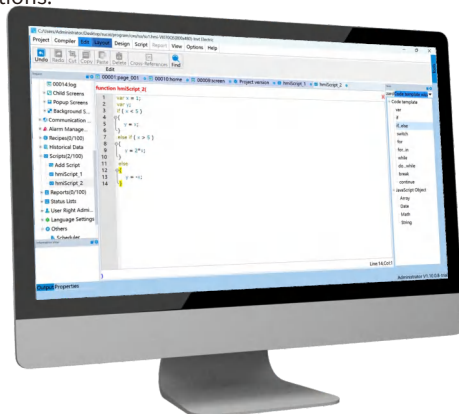
Multi-language

Supports over 100 languages, enabling barrier-free global use.



Script Function

The software supports JavaScript script functions, which can be called via controls for higher flexibility and more operations.



Common Functions

Supports common functions including recipes, data logging, operation logging, alarm logging, user rights management, and icon libraries.



Technical Specifications

Model	VI043QS	VI070QS	VI102QS	VI156QS
Display				
Display size	4.3"	7"	10.2"	15.6"
Resolution	480×272	1024×600	1024×600	1920×1080
Screen material	ITO			
Color depth	24bit			
Brightness (cd/m ²)	400	450	300	
Backlight type	LED			
Backlight life (hr)	20000			
Touch panel type	4-wire high accuracy touch panel			
CPU and memory				
CPU	Cortex-A7 1GHz (dual core)			
Memory	128MB DDR3			256MB DDR3
Flash	256MB Flash			4G EMMC
Communication interface				
USB	USB Host×1 , USB Client×1			
Serial interface	COM1:RSRS485 (2PIN)	COM1:RS232,COM2:RS485/422, COM3:RS485 (3PIN)	COM1:RS232,COM2:RS485/422,COM3:RS485	
Ethernet	●			
SD card slot	-			
Power supply				
Rated voltage	12~24VDC(±15%)			
Rated power	4W	7W		
Environment				
Work temperature	-20~55℃			
Work humidity	5~95%RH (No condensation)			
Protection level	IP65(front panel)			
Certification				
CE	EN55032, EN55035			
FCC compatibility	FCC, Class A			
RoHS	●			
Dimensions and weight				
Physical dimension (mm)	139×86×31	203×145×35	273×211×40	395×257×31
Hole dimension (mm)	132×80	192×138	259×201	383×246
Weight (kg)	0.24	0.7	1.05	2.45
configuration				
Configuration software	INVT Touch Station			

Note: ● Indicates Support - indicates not supported

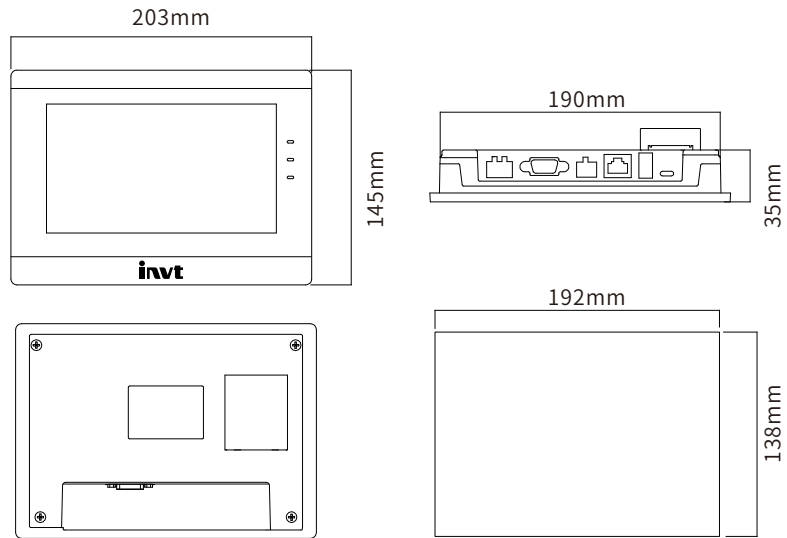
VI043QS and VI156QS are scheduled to be launched in Q3 2026.

Ordering Information

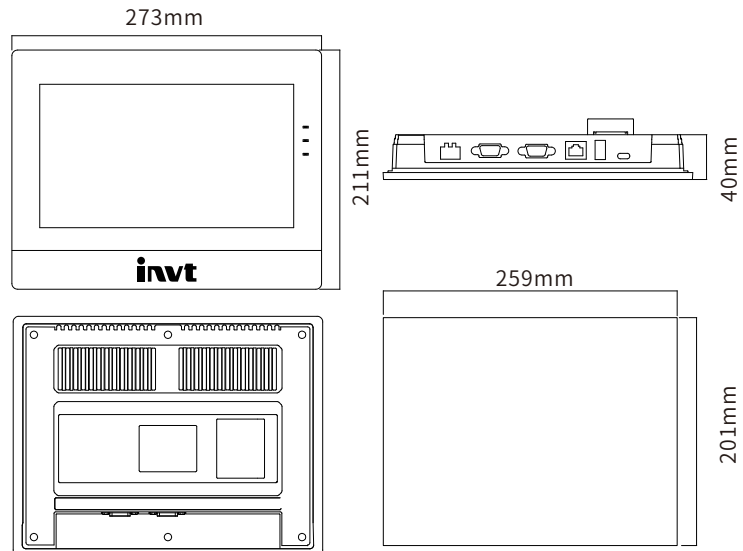
Ordering Code	Model	Description	Mounting Hole Dimensions
11026-00038	VI070QS	7-inch, 1024×600 resolution, 24-bit color, 3 serial ports, 1 Ethernet port; RoHS	192 x 138mm
11026-00037	VI102QS	10.2-inch, 1024×600 resolution, 24-bit color, 3 serial ports, 1 Ethernet port; RoHS	259 x 201mm

Dimension

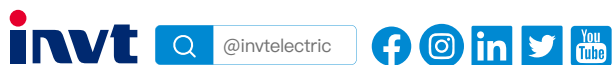
VI070QS



VI102QS



Your Trusted Industry Automation Solution Provider



E-mail: overseas@invt.com.cn

Website: www.invt.com

SHENZHEN INVT ELECTRIC CO.,LTD. INVT Guangming Technology Building, Songbai Road, Matian, Guangming District, Shenzhen, China

- Industrial Automation:
- HMI
 - PLC
 - VFD
 - Servo System
 - Elevator Intelligent Control System
 - Rail Transit Traction System
- Electric Power:
- UPS
 - DCIM
 - Solar Inverter
 - New Energy Vehicle Powertrain System
 - New Energy Vehicle Charging System
 - New Energy Vehicle Motor

INVT Copyright.

Information may be subject to change without notice during product improving.

66003-00461

202512(V1.0)